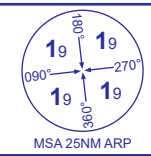


INSTRUMENT APPROACH - ICAO

JERSEY RNP

RNP RWY 08

(ACFT CAT A,B,C,D)

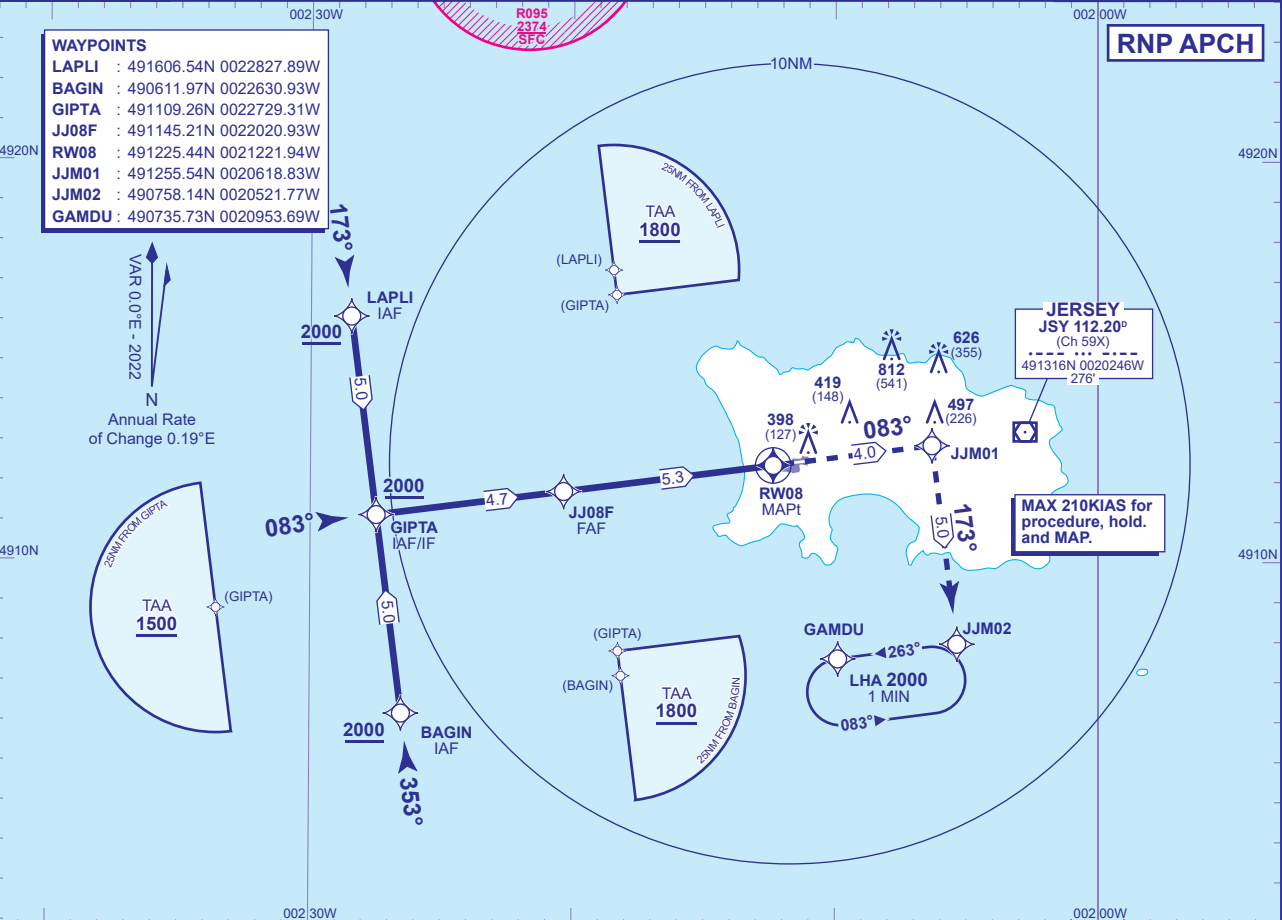


ATC	125.205, 120.450
APP	120.305, 118.555
TWR	119.455
	121.905
ATIS	134.680

JERSEY CONTROL
JERSEY APPROACH
JERSEY TOWER
JERSEY GROUND
JERSEY INFORMATION

AD ELEVATION	277
THR ELEVATION	271
OBSTACLE ELEVATION	812 AMSL (541) (ABOVE THR)
BEARINGS ARE MAGNETIC	

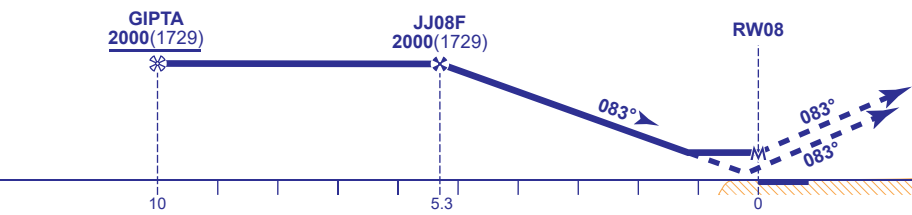
EGNOS	CH 61428 E08A
MIN TEMP	-5°C
TRANSITION ALTITUDE	5000



RECOMMENDED PROFILE LPV/VNAV Vertical Path Angle 3.0°(LNAV 5.24%), 320FT/NM					
NM to RW08	5	4	3	2	1
ALT(HGT)	1910(1639)	1590(1319)	1280(1009)	960(689)	640(369)

TCH 52

**MAPt (LNAV): RW08**  
Continuous climb to 3000. Initially climb straight ahead to JJM01, then turn right to JJM02 and GAMDU to join the hold or as directed by ATC.



Aircraft Category		A	B	C	D	Rate of descent	G/S KT	160	140	120	100	80
OCA (OCH)	LPV	471(200)	471(200)	471(200)	471(200)		FT/MIN	850	740	640	530	430
	LNAV/VNAV	571(300)	571(300)	571(300)	571(300)							
	LNAV	621(350)	621(350)	621(350)	621(350)							
VM(C)OCA (OCH AAL)	Total Area	770(493)	770(493)	1210(933)	1210(933)							
	South of RWY 08/26	770(493)	770(493)	1030(753)	1030(753)							

**NOTE** Aircraft will normally be required to hold not lower than 3000.

CHANGE (4/21): VM(C) OCA (OCH AAL). MAG VAR. HOLD BEARING.